



Sjællandsgade 12, 7100 Vejle

1,056 m² shop for rent





Shop

The property is located in Vejle, the 9th largest city in Denmark with a population of over 50,000.

The city is part of an informal region called the Triangle Area, which is one of the areas outside Copenhagen and Aarhus that is experiencing the highest economic growth.

The property comprises a design of industrial, warehouse, counter and retail properties on a plot of 22,322 m², located in the port area of Vejle and close to the main railway station.



In the center of the city

A central location in the middle of the city



Unique rooms

Shop room with good opportunities to make your own mark



Parking

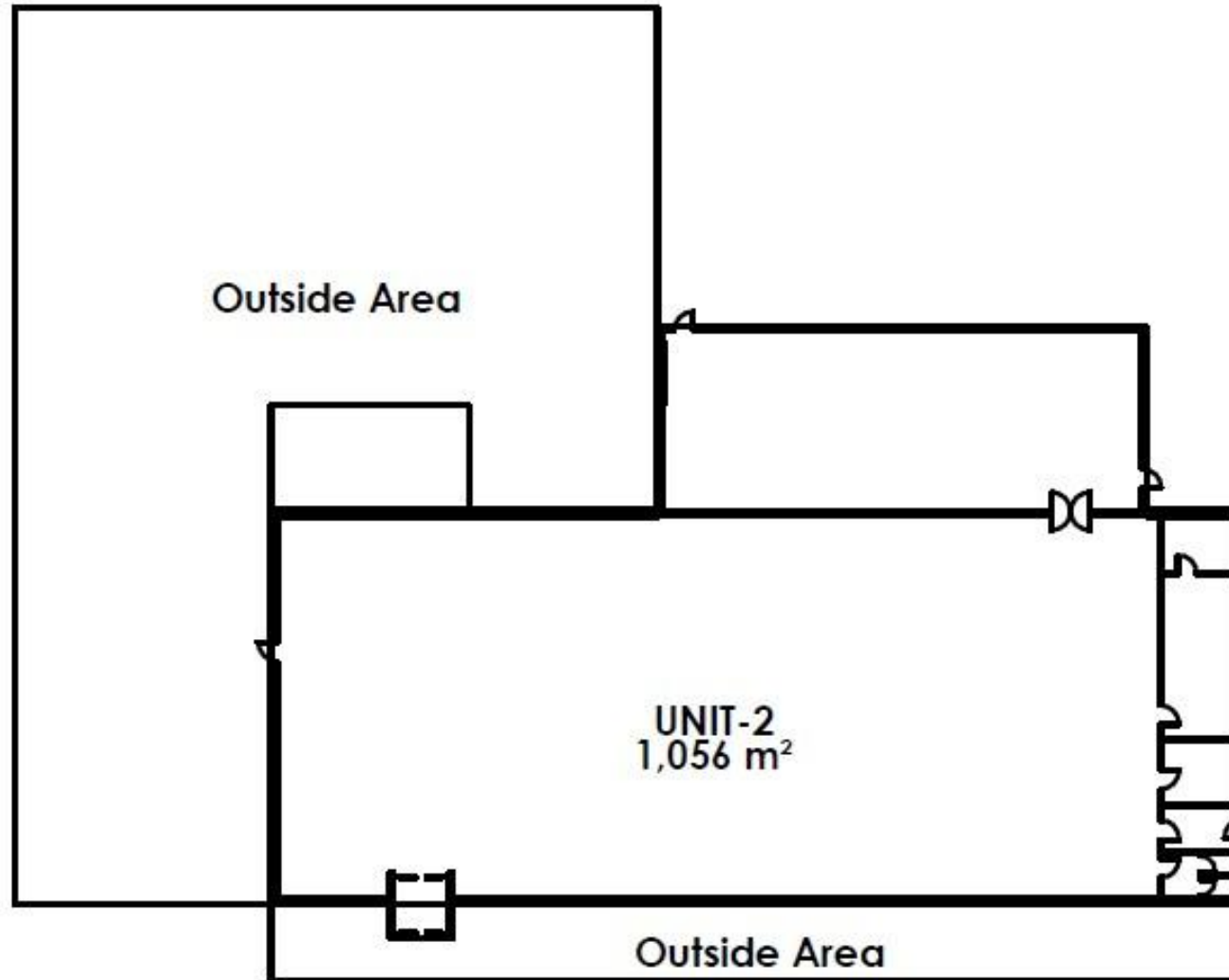
Parking facilities for you and your guests



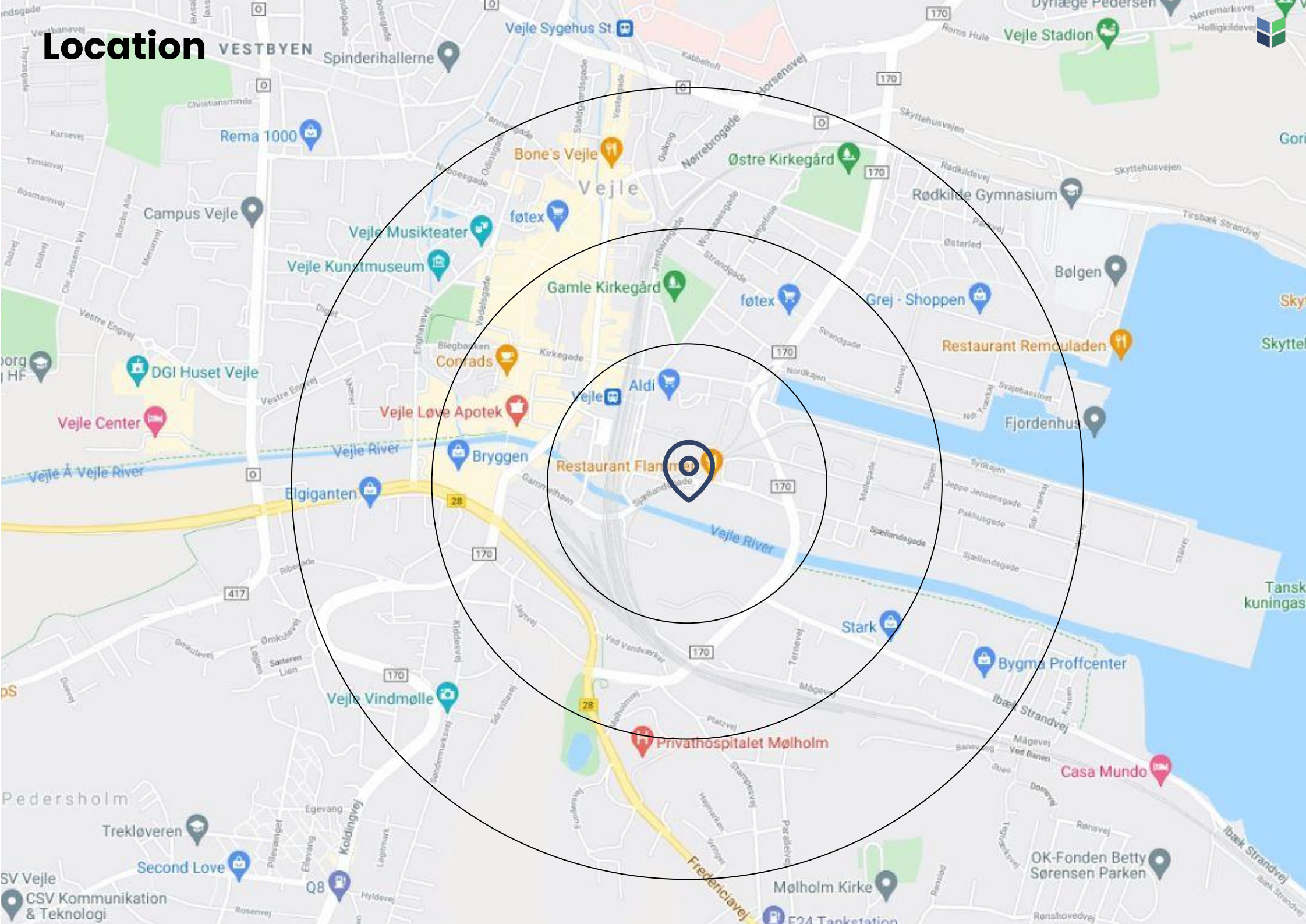
Close to station

Close to Vejle harbor area and the main railway station

Building layout



Location





Rental terms

Size	1,056 m ²
Energy label	C
Lease start	Flexible
Yearly rent/m ²	DKK 1,000
Yearly rent	From DKK 1,056,000
A conto operating expense/m ²	Paid by tenant
A conto heating expense/m ²	Paid by tenant
Payment	Quarterly
Depositum	6 months rent
Indexation	NPI, min. 3%
VAT	Yes
Termination	12 months
Tenure	Flexible

Contakt

(+45) 33 33 93 03
marketing@sparkretail.dk



Spark Retail is part of the real estate investment company Park Street.