



WELCOME TO

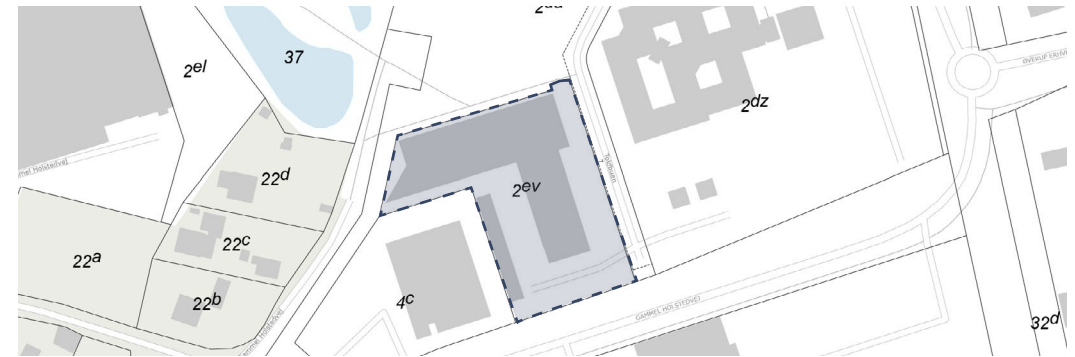
Toldbuen 6

4700 NÆSTVED



Key facts

Address	Toldbuen 6
Postal code/city	DK, 4700, Næstved
Title no	2ev Holdsted By, Herlufsholm
Year of construction	2007
Plot Area	4,018 m ²
Building Area (GLA)	1,981 m ²
Main use(s)	Office
Estimated Rent	DKK 1,600,000



Property Overview

Built in 2007, the property includes more the 1,980 m² of office space, distributed over two adjoining buildings and is leased to one single tenant, Vejdirektoratet - the Danish Road Directorate.

The property has designated and easily accessible parking spots, which is an advantage for both staff and visitors.

The property lies at the top of Toldbuen, leading to a closet parking lot, included some covered parking spots. Facing north, the property has a nice view of attractive green spaces with trees and a small lake.

The property is located on the outskirts of Næstved, in a predominantly industrial area, close to business college, multiple shops and industrial facilities. 3km distant from Næstved's train station, the nearest bus stop is 700m from the property, providing connection to the city center.

Furthermore, is about 500m far from Ringvejen, connecting to Slagelse and Vordingborg as well as the eastbound E47 highway and the northbound E20. With around 45,000 inhabitants, Næstved is the largest town in southern Zealand and the 15th largest town in the whole country.

Location

[See location online](#)

0.5 km to Ringvejen

Zealand Business Center

Bauhaus

Skat

Toldbuen

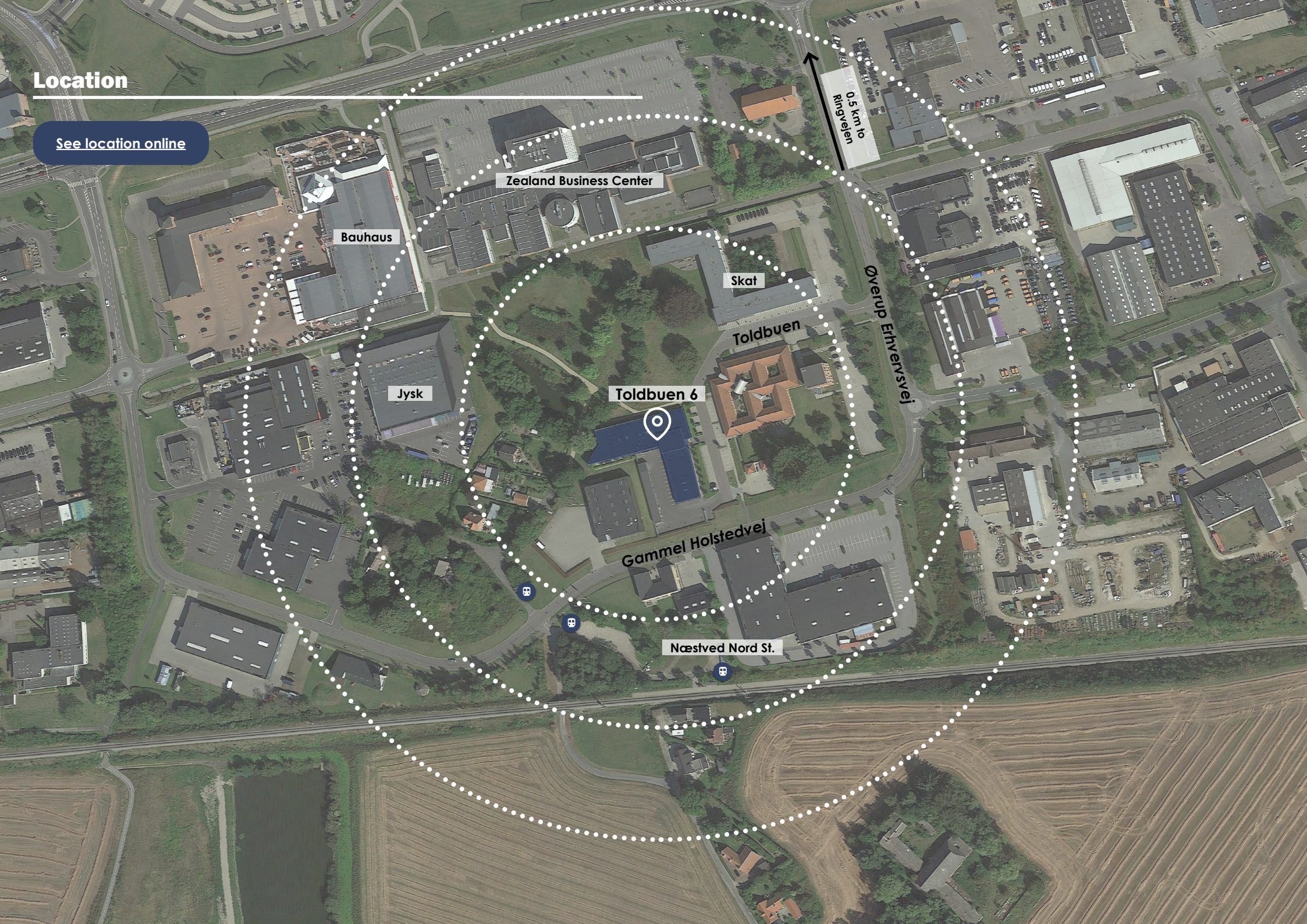
Jysk

Toldbuen 6

Øverup Ehvervsvej

Gammel Holstedvej

Næstved Nord St.



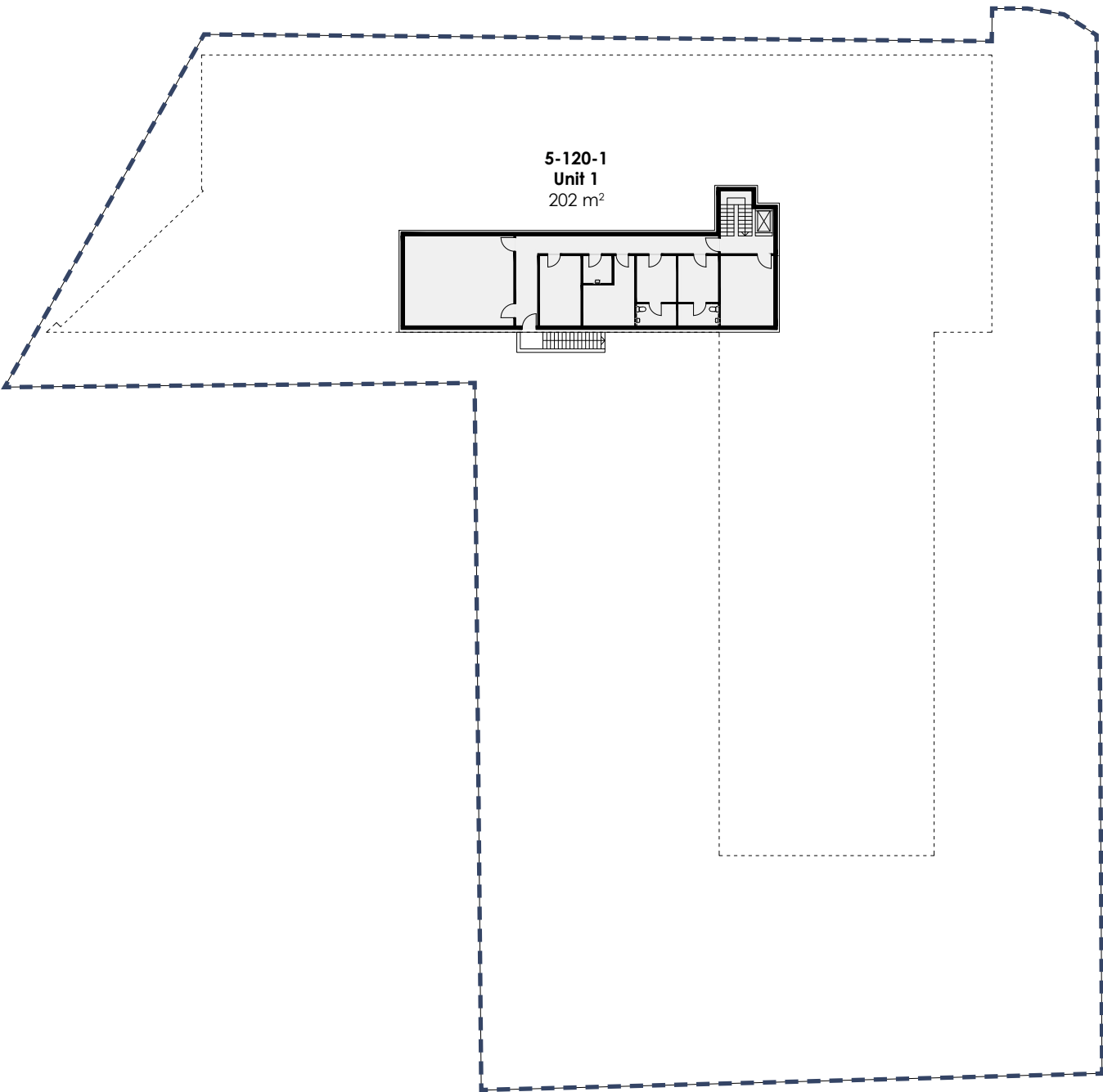
Property pictures



Floorplan - basement



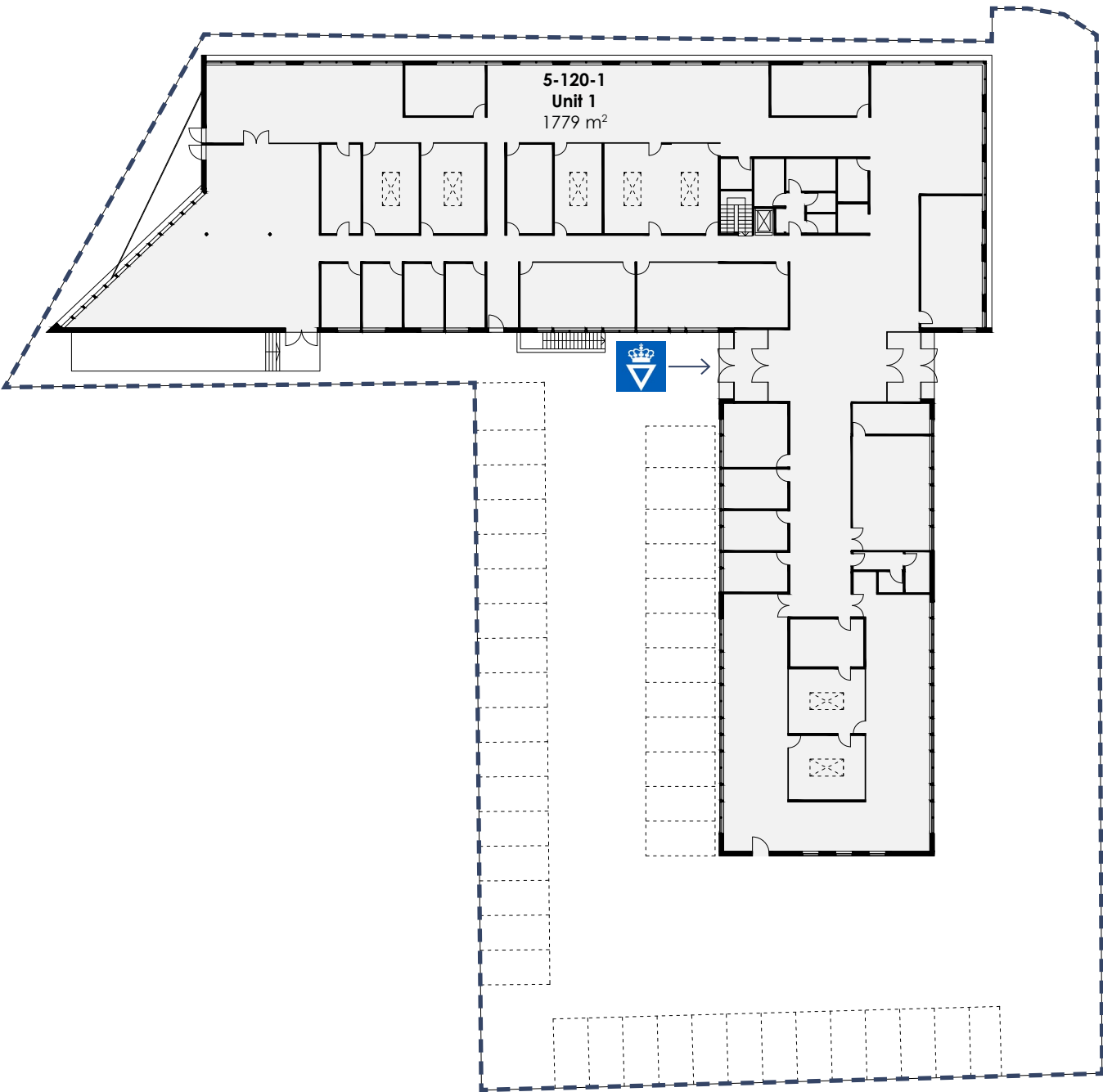
Lease Area Calculation Basement		
No.	Name	Gross Unit Area (m ²)
5-120-1	Unit 1	202
<i>Grand Total</i>		202



Floorplan - ground floor



Lease Area Calculation Ground Floor		
No.	Name	Gross Unit Area (m ²)
5-120-1	Unit 1	1779
Grand Total		1,779



Contact us



Christian Seitzberg

Head of asset management

+45 40 80 25 44

chs@nordicom.dk

[Check our website](#)

Park Street Nordicom

Svanevej 12, 2400 Copenhagen NV

+45 33 33 93 03

nordicom@nordicom.dk

