



WELCOME TO

**Svendborgvej 275**

5260 ODENSE

## Key facts

Address	Svendborgvej 275
Postal code/city	DK, 5260, Odense
Title no	1gt, Lindved Hgd., Stenløse
Year of construction	1972
Plot Area	9944 m <sup>2</sup>
Building Area (GLA)	2000 m <sup>2</sup>
Main use(s)	Retail
Estimated Rent	DKK 2,600,000



## Property Overview

Built in 1972, the property includes 2000 m<sup>2</sup> of retail space, currently rented to an international highly reputed clean energy car company. In the past, the property served as a big box outlet of a major home furnishings retail chain.

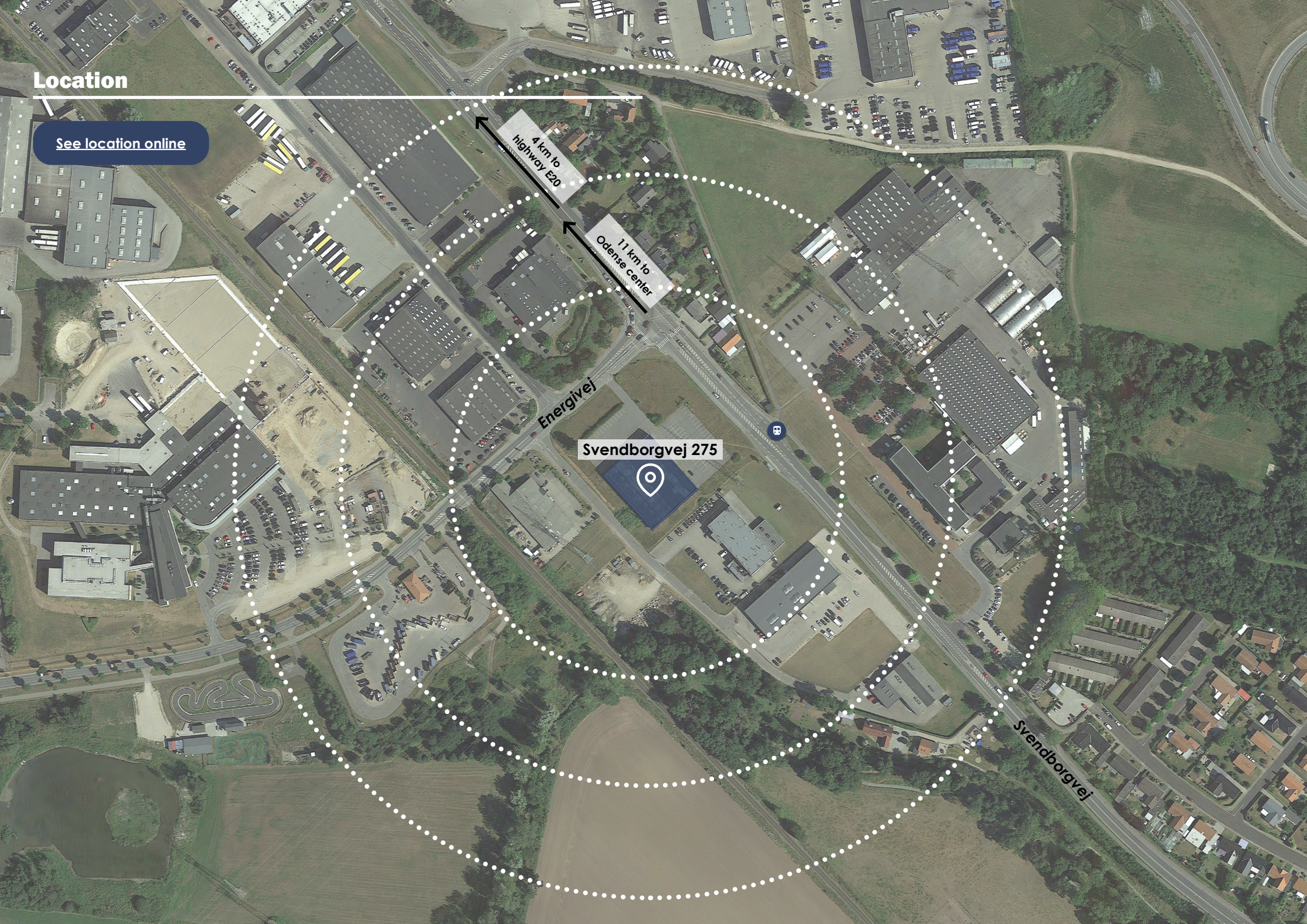
Consequently, the ceiling height is relatively high, and the layout is nice and open, with ample space for various kinds of goods and articles. On the north-western part of the site there are parking spaces as well as two loading docks, where goods vehicles can be loaded and unloaded. Marked parking spaces are also available on the north-eastern site, in connection with the main entrance, making them easily accessible to customers.

The property is located in the southern part of Odense, in a predominantly industrial location surrounded by a mixed-use business area, featuring mainly large car dealers and minor light and heavy industry facilities. The location is known foremost for its robotics cluster. Close to the property lies a small-scale residential area and the Højby city district. North of the property, the new Odense University Hospital is under construction. The new light rail will call at the new hospital and connect to Hjallese train station, some 2 km from the property.

From the property, it is approx. 8.2 km to Odense central station and approx. 5 minutes by car to direct highway access (E20). With more than 200,000 inhabitants, Odense is the third largest city in Denmark and the largest city on the island of Fyn.

# Location

[See location online](#)



Energivej

Svendborgvej 275

Svendborgvej

4 km to  
highway E20

11 km to  
Odense center

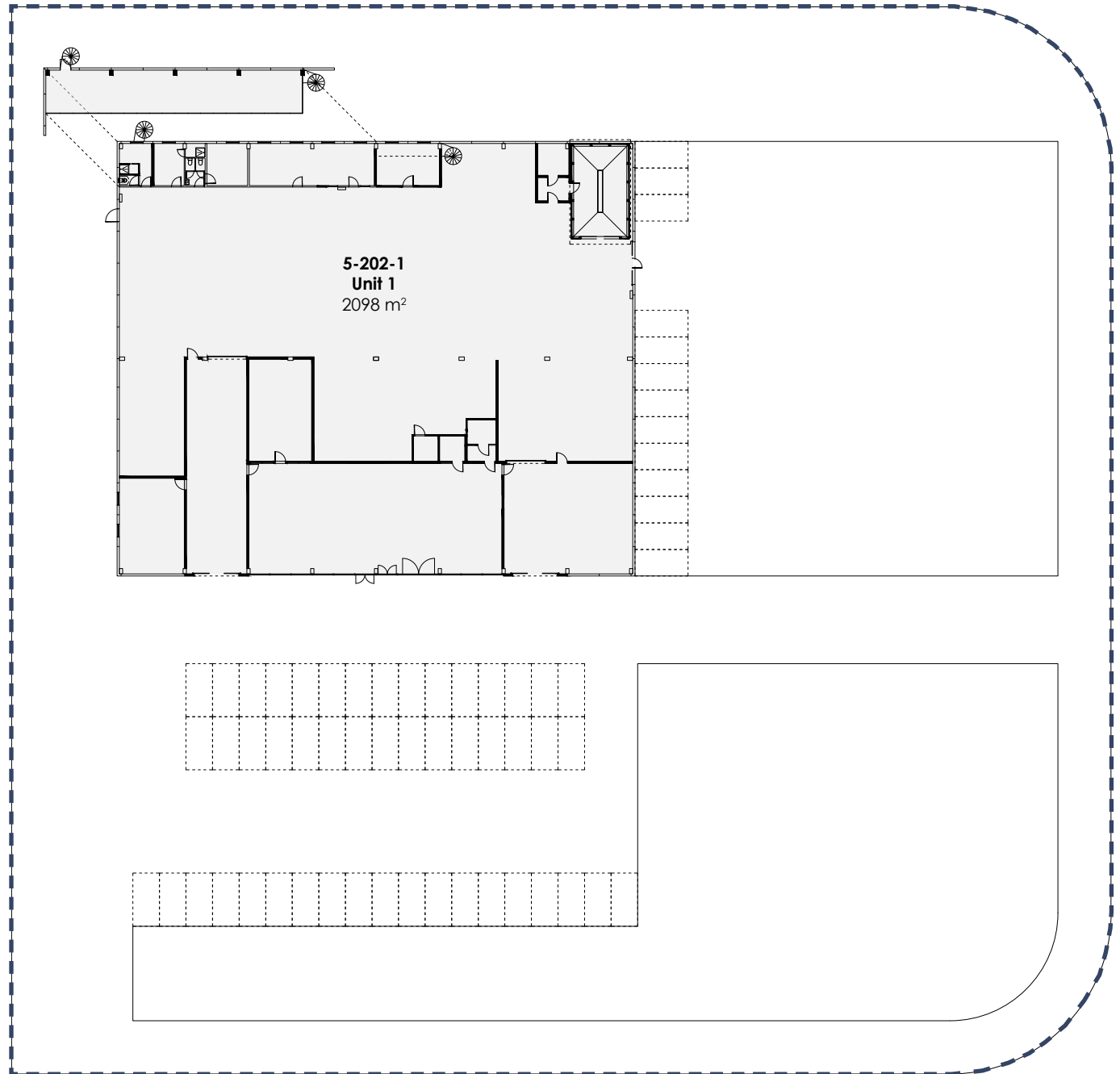
# Property pictures



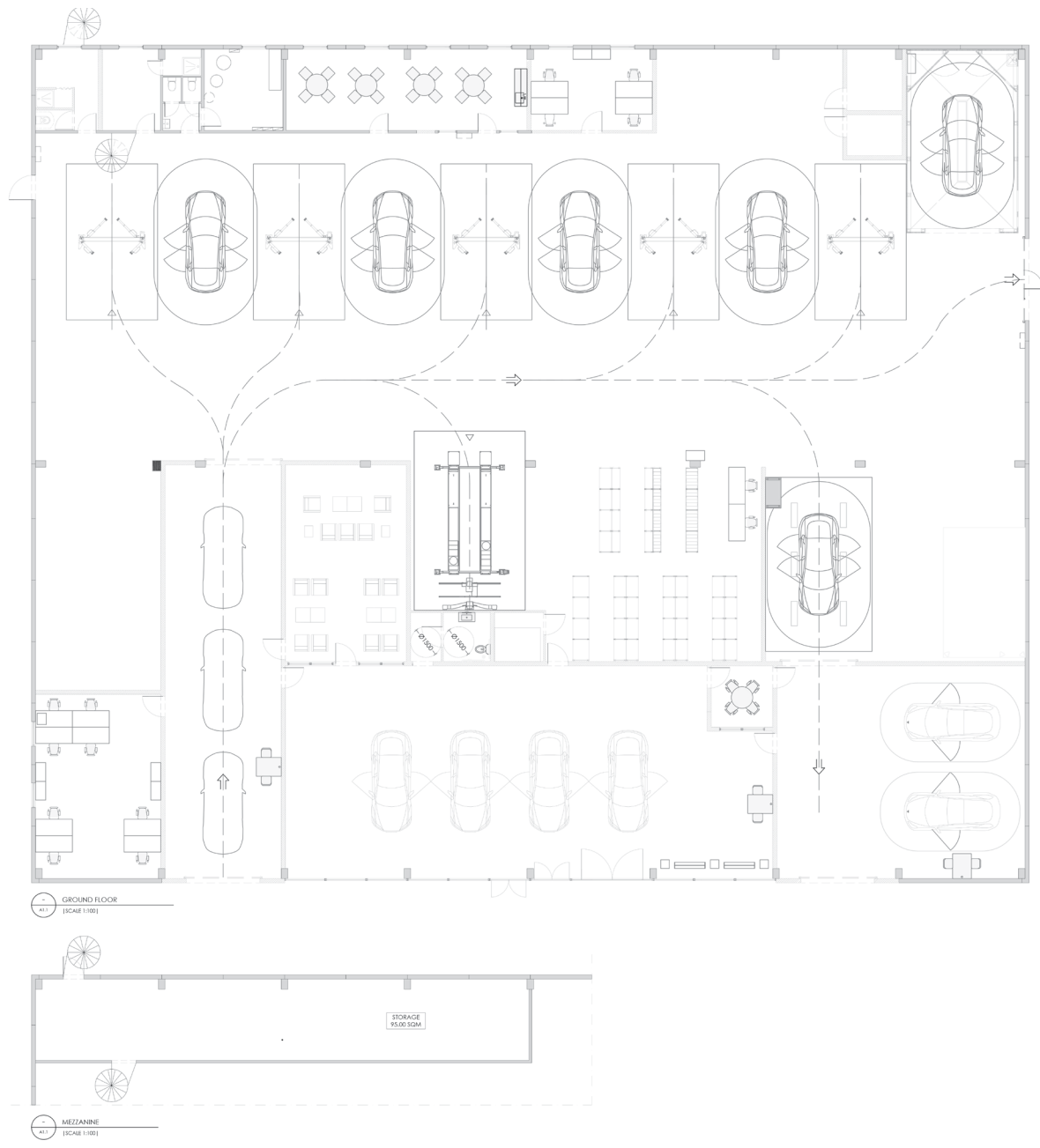


# Floorplan - ground floor

Lease Area Calculation Ground Floor		
No.	Name	Gross Unit Area (m <sup>2</sup> )
5-202-1	Unit 1	2098
<i>Grand Total</i>		<b>2,098</b>



# Floorplan - ground floor



## Contact us



### Christian Seitzberg

*Head of asset management*

+45 40 80 25 44

chs@nordicom.dk

[Check our website](#)

#### **Park Street Nordicom**

Svanevej 12, 2400 Copenhagen NV

+45 33 33 93 03

nordicom@nordicom.dk

