



WELCOME TO

Mosede Center - Lilleholm 1

2670 GREVE



Key facts

Address	Lilleholm 1
Postal code/city	DK, 2670, Greve
Title no	3ll, Mosede By, Greve
Year of construction	1975
Plot Area	5500 m ²
Building Area (GLA)	1917 m ²
Main use(s)	Retail
Estimated Rent	DKK 1,800,000



Property Overview

Built in 1975, the property includes more than 1900 m² of retail spaces, distributed over a one level building.

Currently, in the center there is a Netto, a pizzeria and a Chinese restaurant. Furthermore, some smaller units are rented to a doctor, a hairdresser and an accountant. Netto creates a stable flow of potential costumers to the center.

On the property, there are building rights that allows to add residential on top of the existing building, a preliminary project was developed as shown on page 6.

The property is located at the beginning of Lilleholm and has a vast public parking spaces where the costumers can easily find a spot.

The property in well inserted in the urban structure of Greve, close to Mosede Church and Mosede School and less than 2km far from the City Hall.

The surroundings have attractive green spaces with Mosede Park and its lake right in front of the property.

Close to bus stops, the property is also 1.5 km far from the E20 highway, leading directly to Copenhagen in less than 30 minutes by car.

Location

See location online

1.5 km to
highway E20

Mosedes School

Mosedes Church

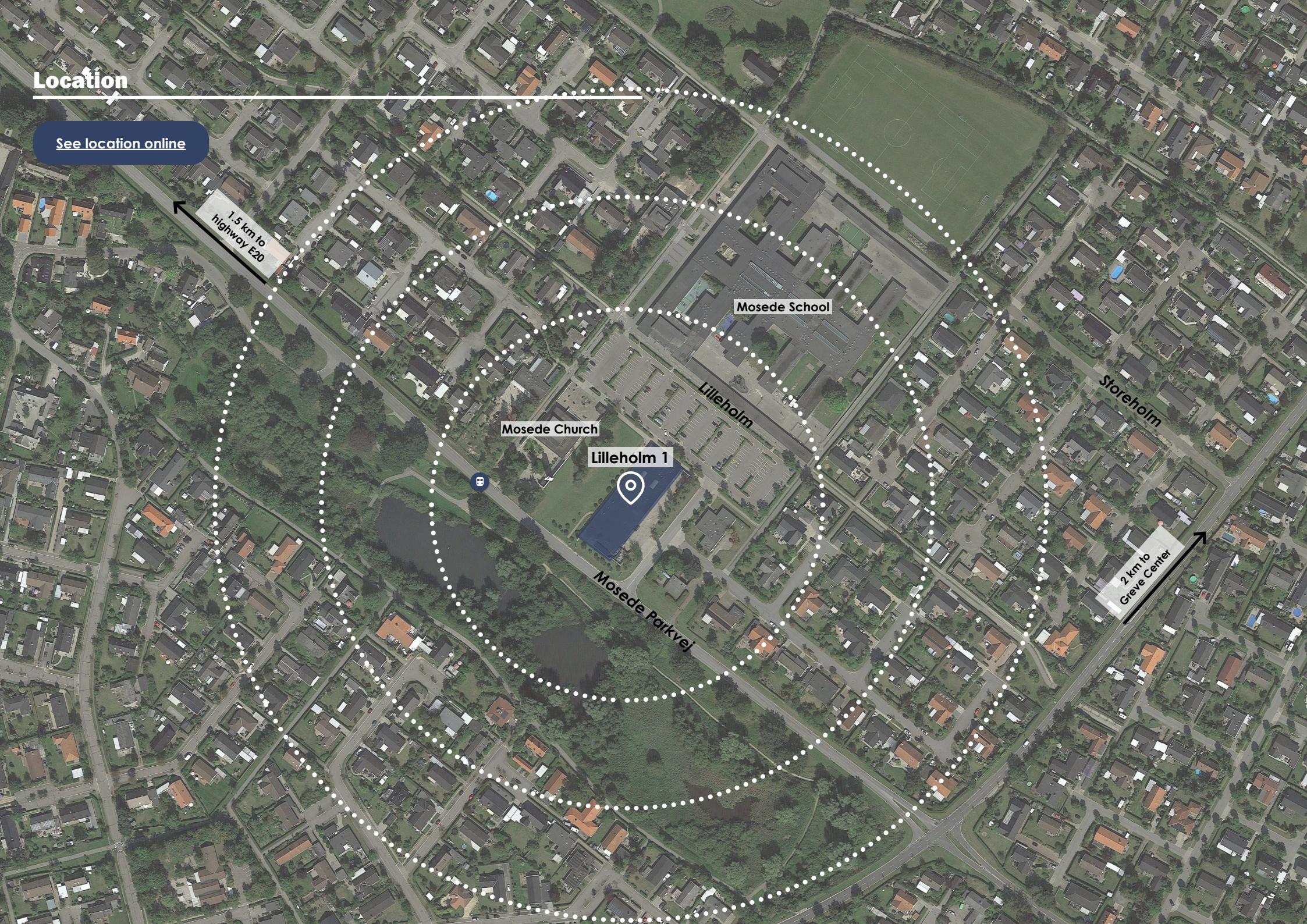
Lilleholm 1

Lilleholm

Storeholm

2 km to
Creve Center

Mosedes Parkvej



Property pictures

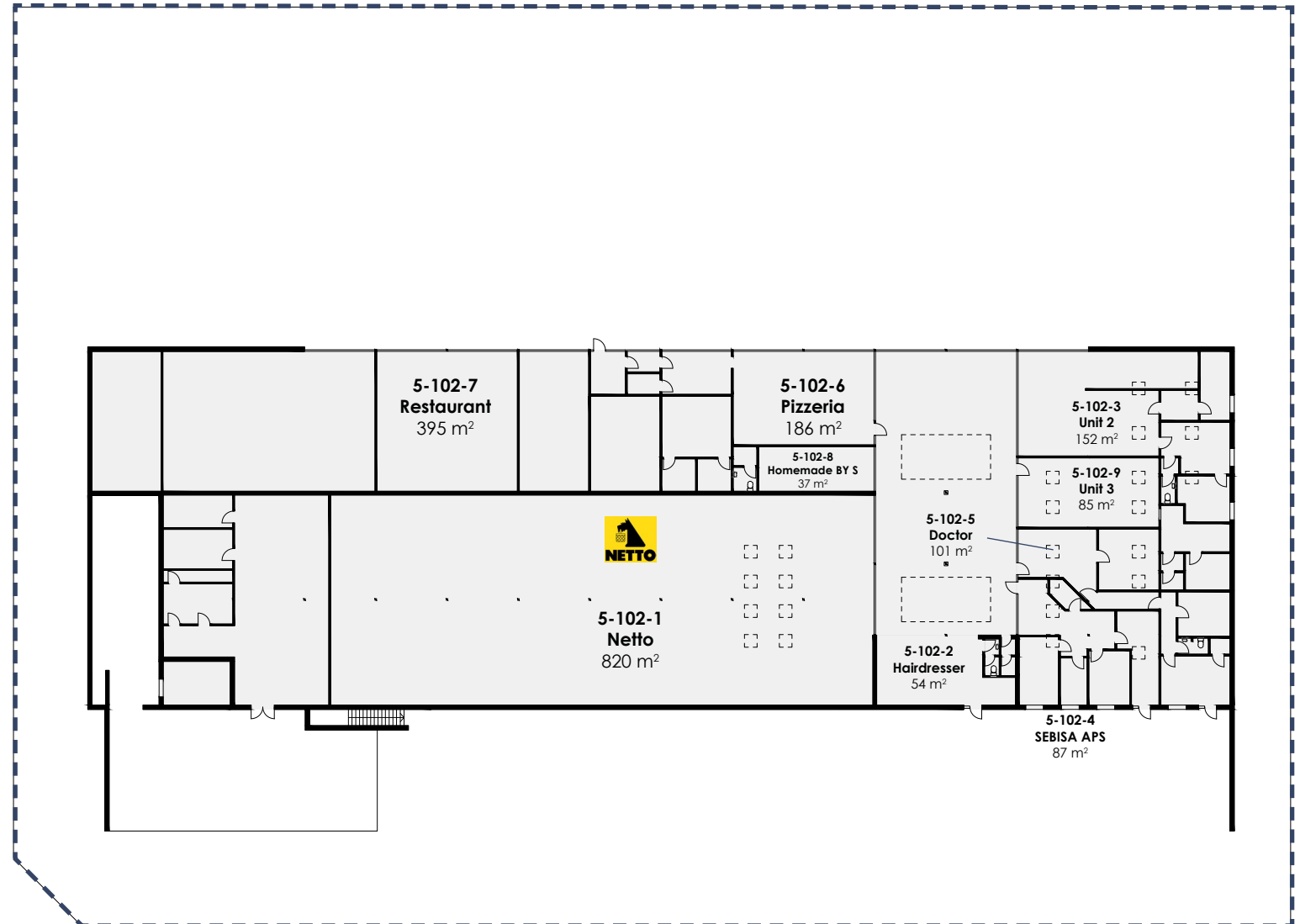




Floorplan - ground floor

Lease Area Calculation Ground Floor

No.	Name	Gross Unit Area (m ²)
5-102-1	Netto	820
5-102-2	Hairdresser	54
5-102-3	Unit 2	152
5-102-4	SEBISA ApS	87
5-102-5	Doctor	101
5-102-6	Pizzeria	186
5-102-7	Restaurant	395
5-102-8	Homemade BY S	37
5-102-9	Unit 3	85
Grand Total		1,917





Residential development proposal

New housing units	48
Standard housing size	approx. 80 m ²
Housing area	3942 m ²
Commercial area	2274 m ²
Total	6216 m ²
Total free space	1814 m ²
Occupancy rate	113%



Contact us



Christian Seitzberg

Head of asset management

+45 40 80 25 44

chs@nordicom.dk

[Check our website](#)

Park Street Nordicom

Svanevej 12, 2400 Copenhagen NV
+45 33 33 93 03
nordicom@nordicom.dk

