



Birkemose Allé 23-35, 6000 Kolding

213-2,128 m² office for rent



Location



Kolding
Tennis Klub

Fynsvej

Birkemose Allé 23-33

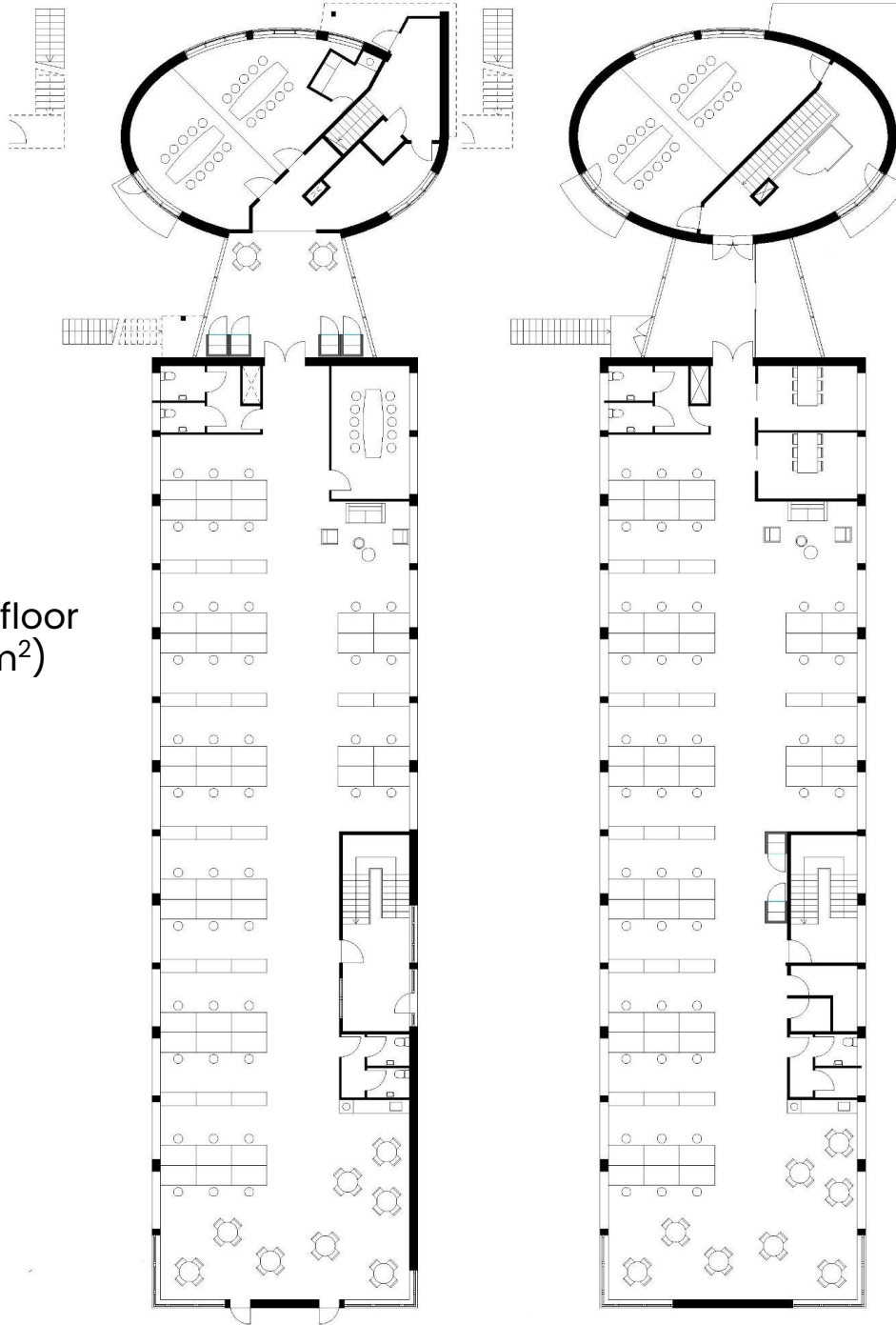
IBC Innovationsfabrikken

Schneider
Electric

Nr. Bjertvej

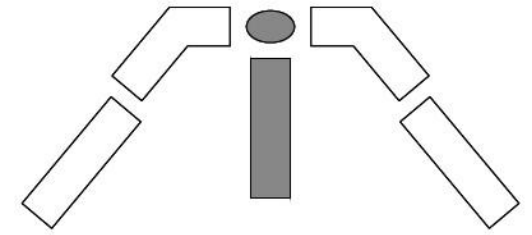
Birkemosevej

Birkemose Allé 29

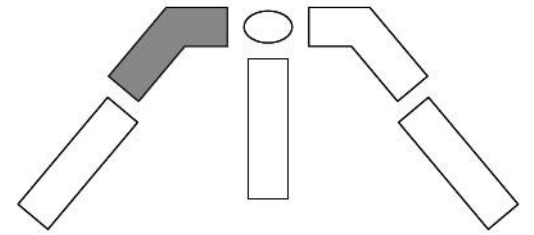
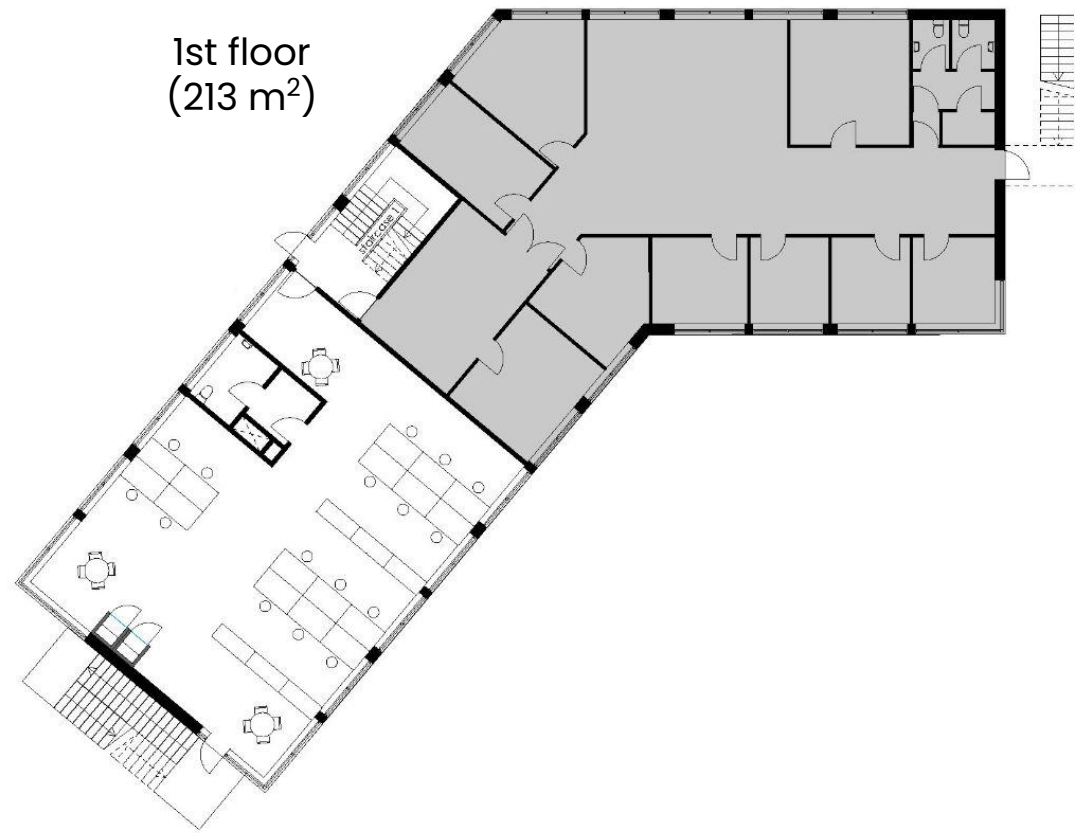
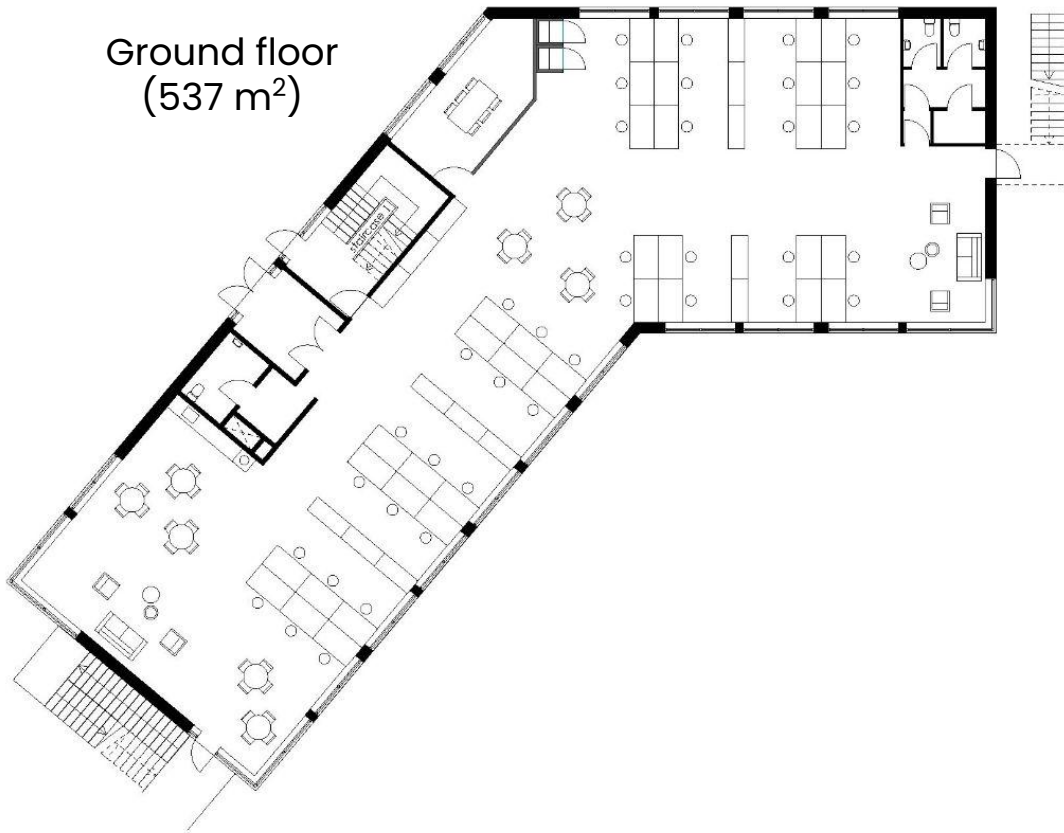


Ground floor
(680 m²)

1st floor
(680 m²)



Birkemose Allé 31













Rental terms

Size	213–2,128 m ²
Energy label	B
Lease start	Flexible
Yearly rent/m ²	DKK 850
Yearly rent	181,050–1,808,800
A conto operating expense/m ²	DKK 160
A conto heating expense/m ²	DKK 105
Total yearly rent	DKK 237,795–2,372,720
Payment	Quarterly
Depositum	6 months rent
Indexation	NPI, min. 3%
VAT	Yes
Termination	6 months
Tenure	5 years



Contact

(+45) 33 33 93 03
marketing@sparkoffices.dk



Spark Offices is part of the real estate investment company Park Street.